

B.B.H.PTY. LTD ACN 010 427 531  
(trading as Bennett and Bennett Group) hereby certify that the vertical and horizontal locations, and dimensions shown on this plan are a true and correct record of the As-Constructed information.

Agent  
Date

I, ..... hereby certify that the As Constructed information shown on this plan is a true and correct record of sizes, types, materials, classes etc, and it corresponds with the relevant approved Engineering Drawings

Signed .....  
RPEQ No. .... Date .....

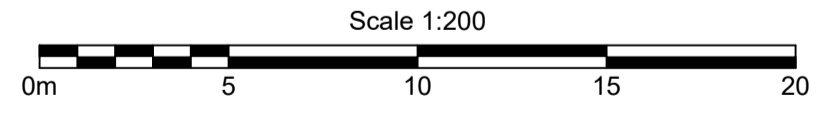
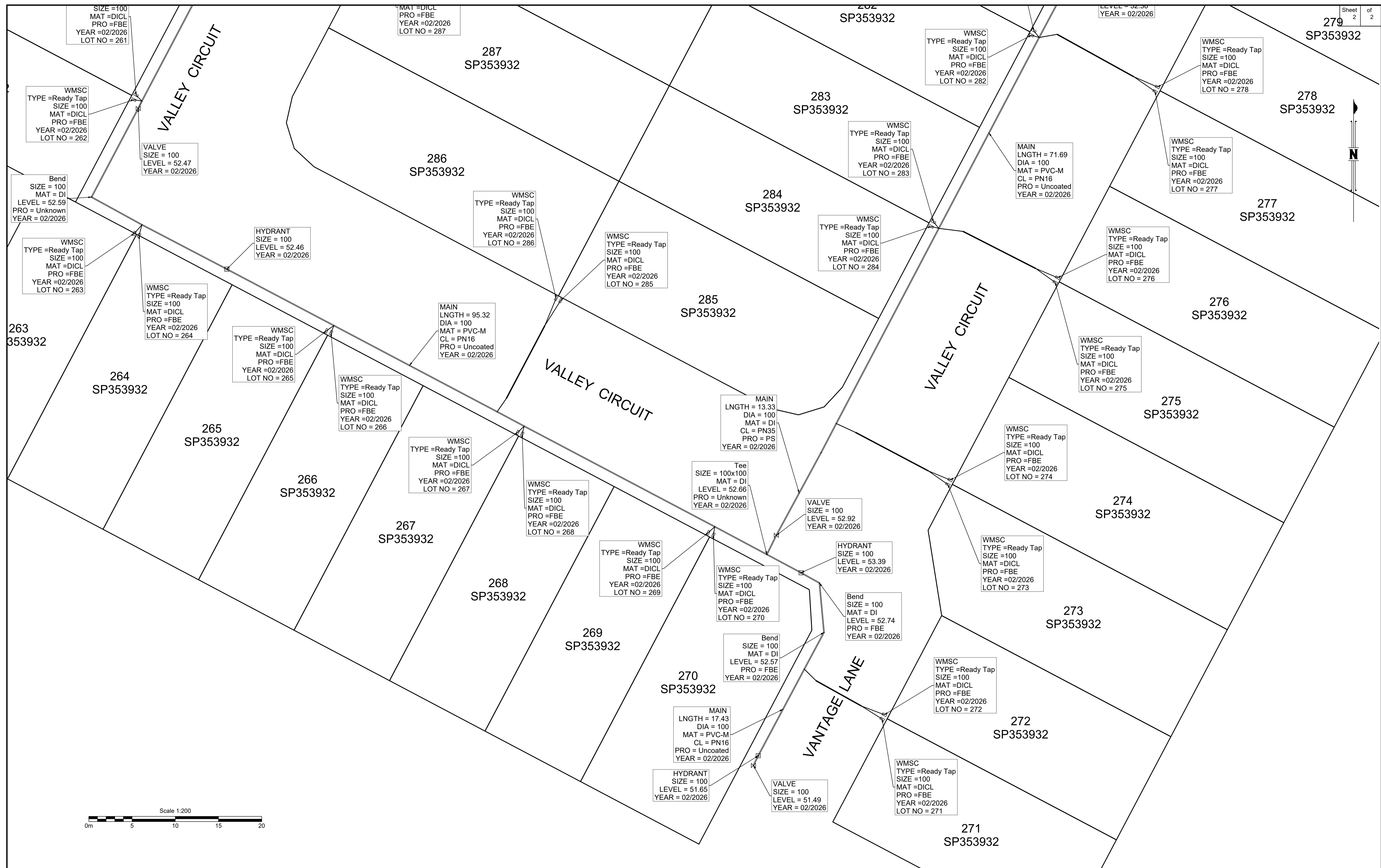
Revisions			
Rev	Description	Date	Initial
A	ORIGINAL	25/05/2026	BDH

**WATERMAIN - AS CONSTRUCTED**  
COURTNEY DRIVE STAGE 5  
UPPER COOMERA  
OPW/2024/349

Client:	HB Australia Pty Ltd
Job No:	171101
Authority:	Council of the City of Gold Coast
Plan No:	171101_061_ASC.pdf
DWG File:	171101_061_ASC.dwg
Level Origin & Datum:	PSM170053 41.380 AHD
Scale:	1:200 @ A1
Drawn:	DK
Date:	27/05/26

**BENNETT + BENNETT**

PO Box 5021, GCMC QLD 9726  
Ph: (07) 5631 8000  
mail@bennettandbennett.com.au  
www.bennettandbennett.com.au



B.B.H.PTY. LTD ACN 010 427 531 (trading as Bennett and Bennett Group) hereby certify that the vertical and horizontal locations, and dimensions shown on this plan are a true and correct record of the As-Constructed information.

Agent  
Date

I, \_\_\_\_\_ hereby certify that the As Constructed information shown on this plan is a true and correct record of sizes, types, materials, classes etc, and it corresponds with the relevant approved Engineering Drawings

Signed \_\_\_\_\_  
RPEQ No. \_\_\_\_\_ Date \_\_\_\_\_

Revisions			
Rev	Description	Date	Initial
A	ORIGINAL	25/05/2026	BDH

**WATERMAIN - AS CONSTRUCTED**  
**COURTNEY DRIVE STAGE 5**  
**UPPER COOMERA**  
**OPW/2024/349**

Client:	HB Australia Pty Ltd
Job No:	171101
Authority:	Council of the City of Gold Coast
Plan No:	171101_061_ASC.pdf
DWG File:	171101_061_ASC.dwg
Level Origin & Datum:	PSM170053 41.380 AHD
1:1000 @ A1	Drawn: DK
Date:	27/05/26

**BENNETT + BENNETT**

PO Box 5021, GCMC QLD 9726  
 Ph: (07) 5631 8000  
 mail@bennettandbennett.com.au  
 www.bennettandbennett.com.au