

B.B.H.PTY. LTD ABN 010 427 531  
(trading as Bennett and Bennett Group) hereby certify that the vertical and horizontal locations, and dimensions shown on this plan are a true and correct record of the As-Constructed information.

Agent  
Date

I, .....  
hereby certify that the As Constructed information shown on this plan is a true and correct record of sizes, types, materials, classes etc, and it corresponds with the relevant approved Engineering Drawings

Signed .....  
RPEQ No. .... Date .....

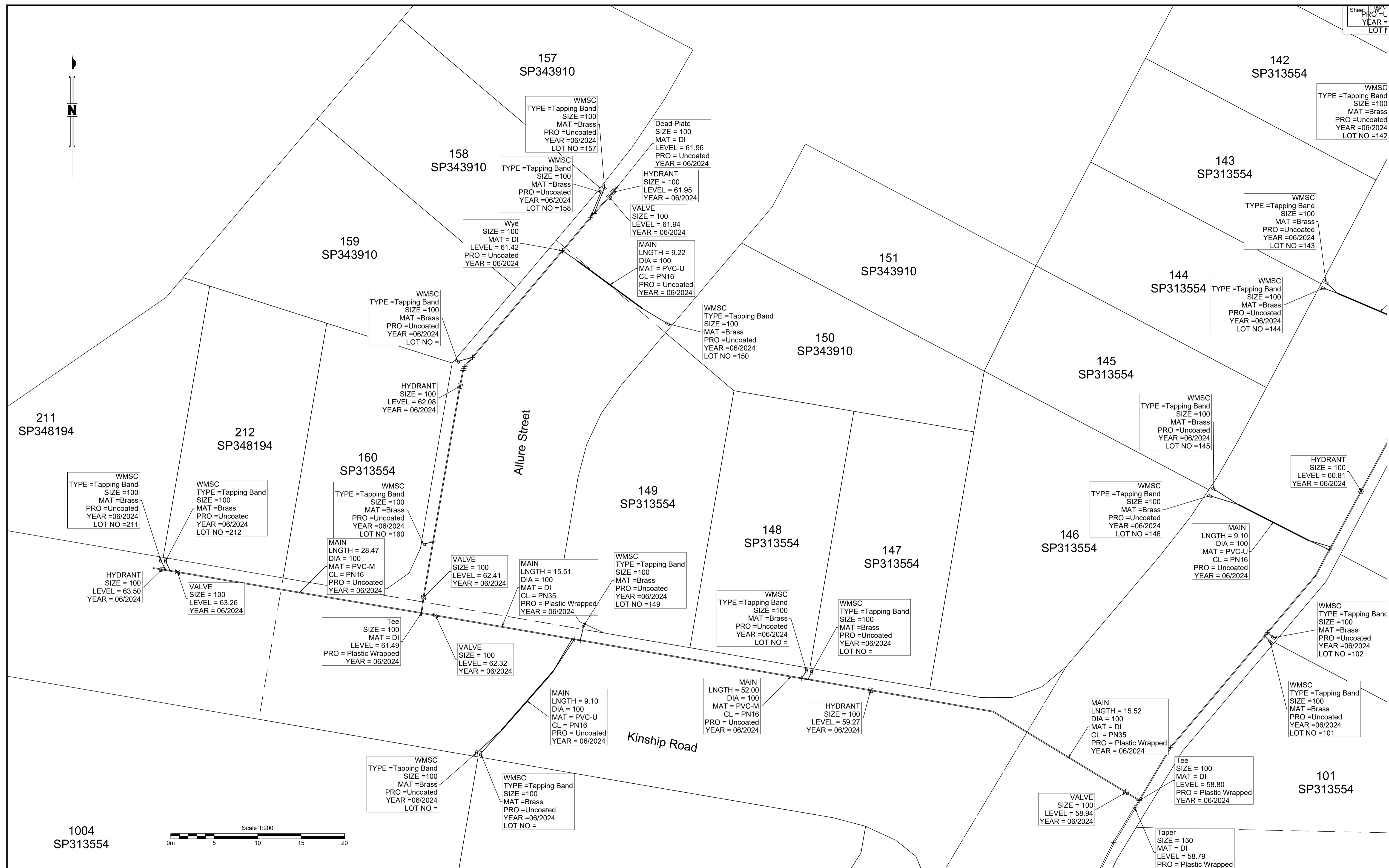
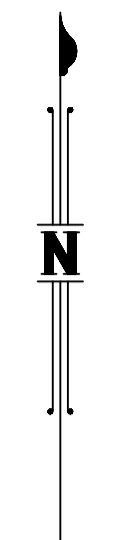
Revisions			
Rev	Description	Date	Initial
A	ORIGINAL	17/01/2025	BDH

**WATERMAIN - AS CONSTRUCTED**  
COURTNEY DRIVE  
UPPER COOMERA  
OPW/2023/311

Client:	HB Australia Pty Ltd
Job No:	171101
Authority:	Council of the City of Gold Coast
Plan No:	171101_044_ASC.pdf
DWG File:	171101_044_ASC.dwg
Level Origin & Datum:	PSM170053 41.380 AHD
Scale:	1:200 @ A1
Drawn:	BDH
Date:	17/01/25

**BENNETT + BENNETT**

PO Box 5021, GCMC QLD 9726  
Ph: (07) 5631 8000  
mail@bennettandbennett.com.au  
www.bennettandbennett.com.au



B.B.H.PTY. LTD ABN 010 427 531  
 (trading as Bennett and Bennett Group) hereby certify  
 that the vertical and horizontal locations, and  
 dimensions shown on this plan are a true and  
 correct record of the As-Constructed information.

Agent  
 Date

I, .....  
 hereby certify that the As Constructed  
 information shown on this plan is a true and  
 correct record of sizes, types, materials,  
 classes etc, and it corresponds with the  
 relevant approved Engineering Drawings

Signed .....  
 RPEQ No. .... Date .....

Revisions			
Rev	Description	Date	Initial
A	ORIGINAL	17/01/2025	BDH

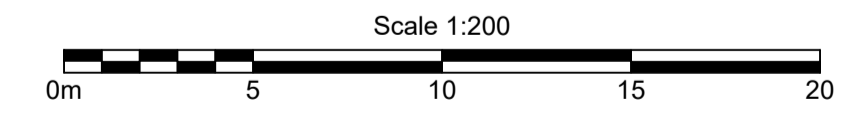
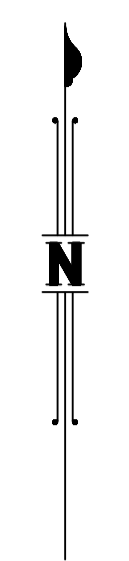
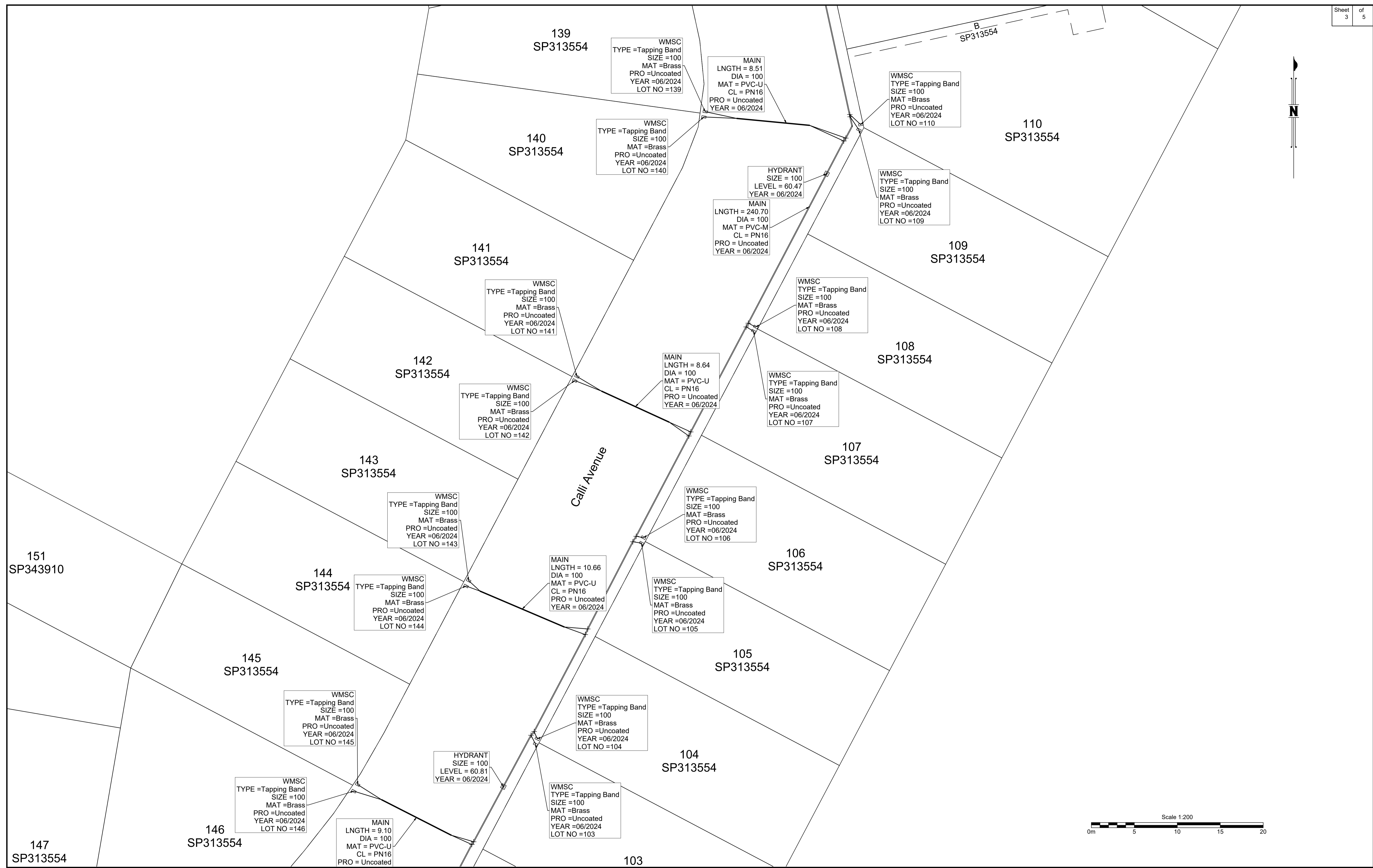
**WATERMAIN - AS CONSTRUCTED**

COURTNEY DRIVE  
 UPPER COOMERA  
 OPW/2023/311

Client: HB Australia Pty Ltd  
 Job No: 171101  
 Authority: Council of the City of Gold Coast  
 Plan No: 171101\_044\_ASC.pdf  
 DWG File: 171101\_044\_ASC.dwg  
 Level Origin & Datum: PSM170053 41.380 AHD  
 1:200 @ A1 Drawn: BDH  
 Date: 17/01/25

**BENNETT + BENNETT**

PO Box 5021, GCMC QLD 9726  
 Ph: (07) 5631 8000  
 mail@bennettandbennett.com.au  
 www.bennettandbennett.com.au



B.B.H.PTY. LTD ABN 010 427 531  
(trading as Bennett and Bennett Group) hereby certify that the vertical and horizontal locations, and dimensions shown on this plan are a true and correct record of the As-Constructed information.

Agent  
Date

I, ..... hereby certify that the As Constructed information shown on this plan is a true and correct record of sizes, types, materials, classes etc, and it corresponds with the relevant approved Engineering Drawings

Signed .....  
RPEQ No. .... Date .....

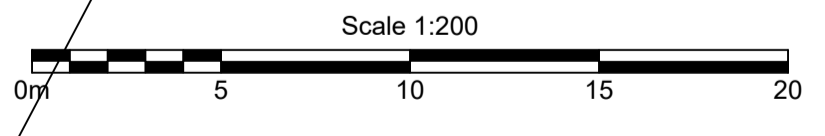
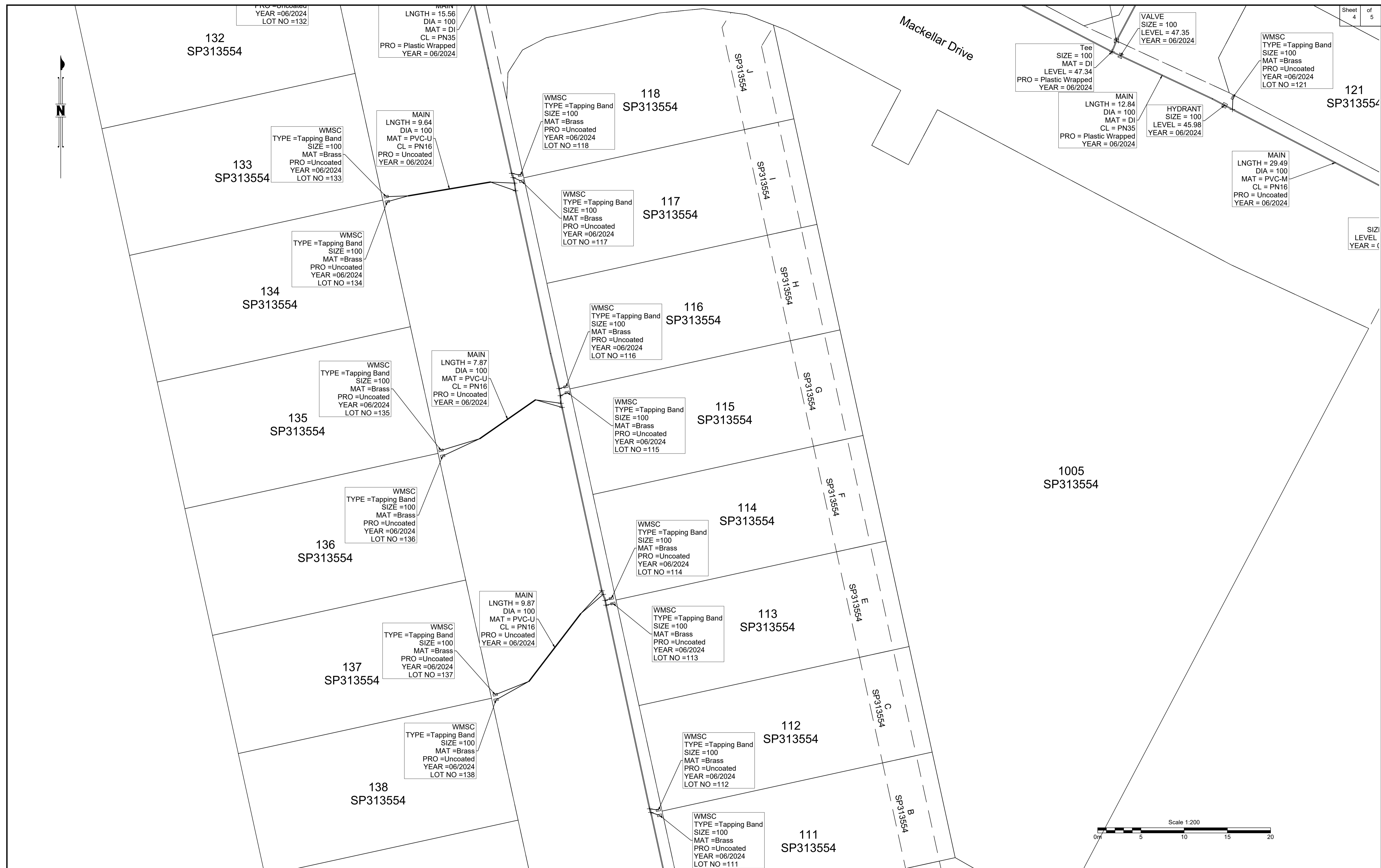
Revisions			
Rev	Description	Date	Initial
A	ORIGINAL	17/01/2025	BDH

**WATERMAIN - AS CONSTRUCTED**  
COURTNEY DRIVE  
UPPER COOMERA  
OPW/2023/311

Client:	HB Australia Pty Ltd
Job No:	171101
Authority:	Council of the City of Gold Coast
Plan No:	171101_044_ASC.pdf
DWG File:	171101_044_ASC.dwg
Level Origin & Datum:	PSM170053 41.380 AHD
Scale:	1:200 @ A1
Drawn:	BDH
Date:	17/01/25

**BENNETT + BENNETT**

PO Box 5021, GCMC QLD 9726  
Ph: (07) 5631 8000  
mail@bennettandbennett.com.au  
www.bennettandbennett.com.au



B.B.H.PTY. LTD ABN 010 427 531  
(trading as Bennett and Bennett Group) hereby certify  
that the vertical and horizontal locations, and  
dimensions shown on this plan are a true and  
correct record of the As-Constructed information.

Agent  
Date

I, .....  
hereby certify that the As Constructed  
information shown on this plan is a true and  
correct record of sizes, types, materials,  
classes etc, and it corresponds with the  
relevant approved Engineering Drawings

Signed .....  
RPEQ No. .... Date .....

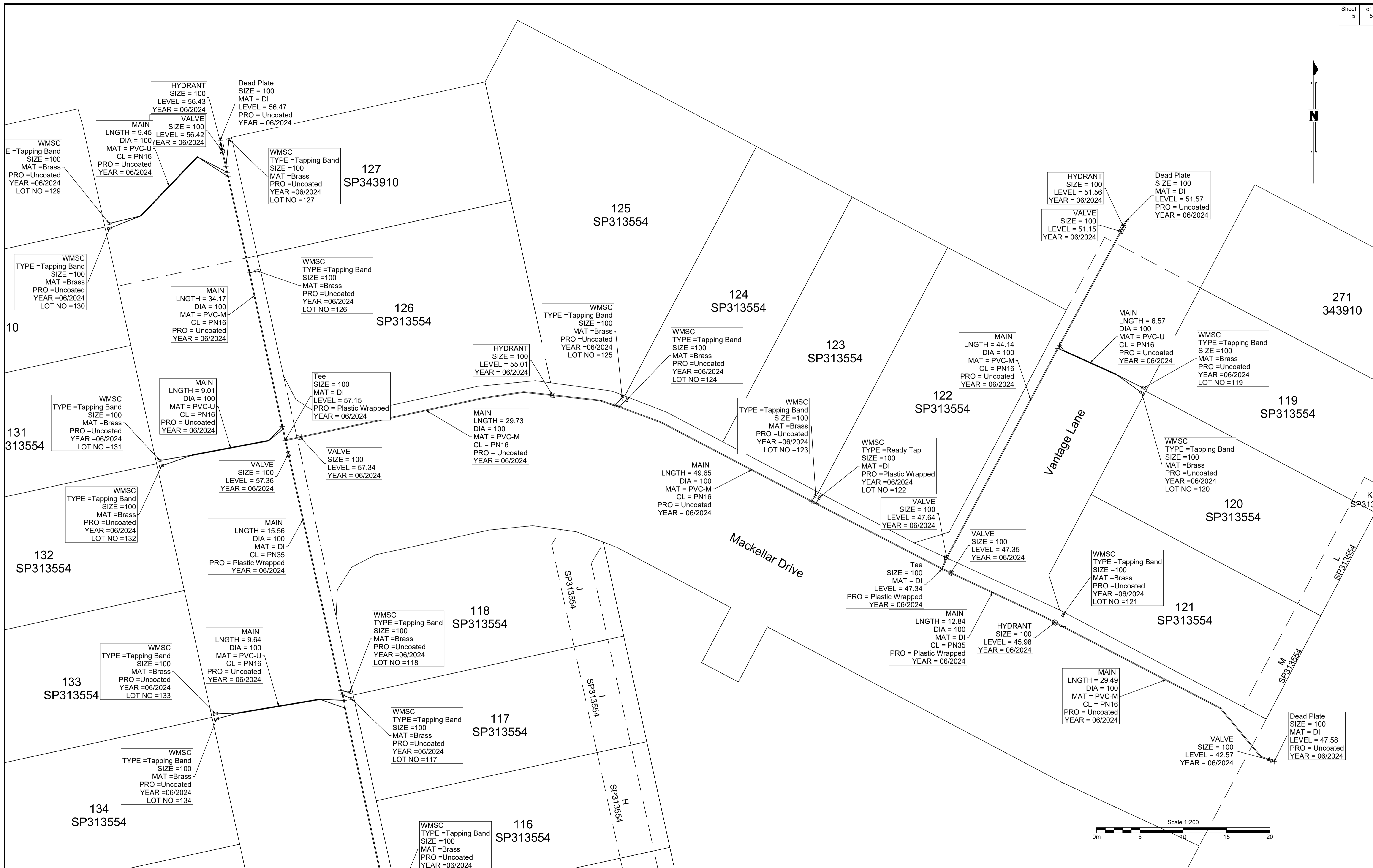
Revisions			
Rev	Description	Date	Initial
A	ORIGINAL	17/01/2025	BDH

**WATERMAIN - AS CONSTRUCTED**  
COURTNEY DRIVE  
UPPER COOMERA  
OPW/2023/311

Client: HB Australia Pty Ltd	
Job No: 171101	
Authority: Council of the City of Gold Coast	
Plan No: 171101_044_ASC.pdf	
DWG File: 171101_044_ASC.dwg	
Level Origin & Datum: PSM170053 41.380 AHD	Drawn: BDH
1:200 @ A1	Date: 17/01/25

**BENNETT + BENNETT**

PO Box 5021, GCMC QLD 9726  
Ph: (07) 5631 8000  
mail@bennettandbennett.com.au  
www.bennettandbennett.com.au



B.B.H.PTY. LTD ABN 010 427 531 (trading as Bennett and Bennett Group) hereby certify that the vertical and horizontal locations, and dimensions shown on this plan are a true and correct record of the As-Constructed information.

Agent  
Date

I, \_\_\_\_\_ hereby certify that the As Constructed information shown on this plan is a true and correct record of sizes, types, materials, classes etc, and it corresponds with the relevant approved Engineering Drawings

Signed \_\_\_\_\_  
RPEQ No. \_\_\_\_\_ Date \_\_\_\_\_

Revisions			
Rev	Description	Date	Initial
A	ORIGINAL	17/01/2025	BDH

**WATERMAIN - AS CONSTRUCTED**  
COURTNEY DRIVE  
UPPER COOMERA  
OPW/2023/311

Client: HB Australia Pty Ltd  
Job No: 171101  
Authority: Council of the City of Gold Coast  
Plan No: 171101\_044\_ASC.pdf  
DWG File: 171101\_044\_ASC.dwg  
Level Origin & Datum: PSM170053 41.380 AHD  
1:1000 @ A1 Drawn: BDH  
Date: 17/01/25

**BENNETT + BENNETT**  
PO Box 5021, GCMC QLD 9726  
Ph: (07) 5631 8000  
mail@bennettandbennett.com.au  
www.bennettandbennett.com.au