

B.B.H.PTY. LTD ABN 010 427 531 (trading as Bennett and Bennett Group) hereby certify that the vertical and horizontal locations, and dimensions shown on this plan are a true and correct record of the As-Constructed information.

Agent
Date

I, hereby certify that the As Constructed information shown on this plan is a true and correct record of sizes, types, materials, classes etc, and it corresponds with the relevant approved Engineering Drawings

Signed
RPEQ No. Date

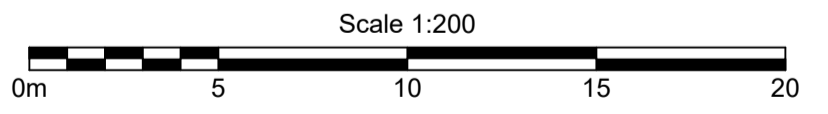
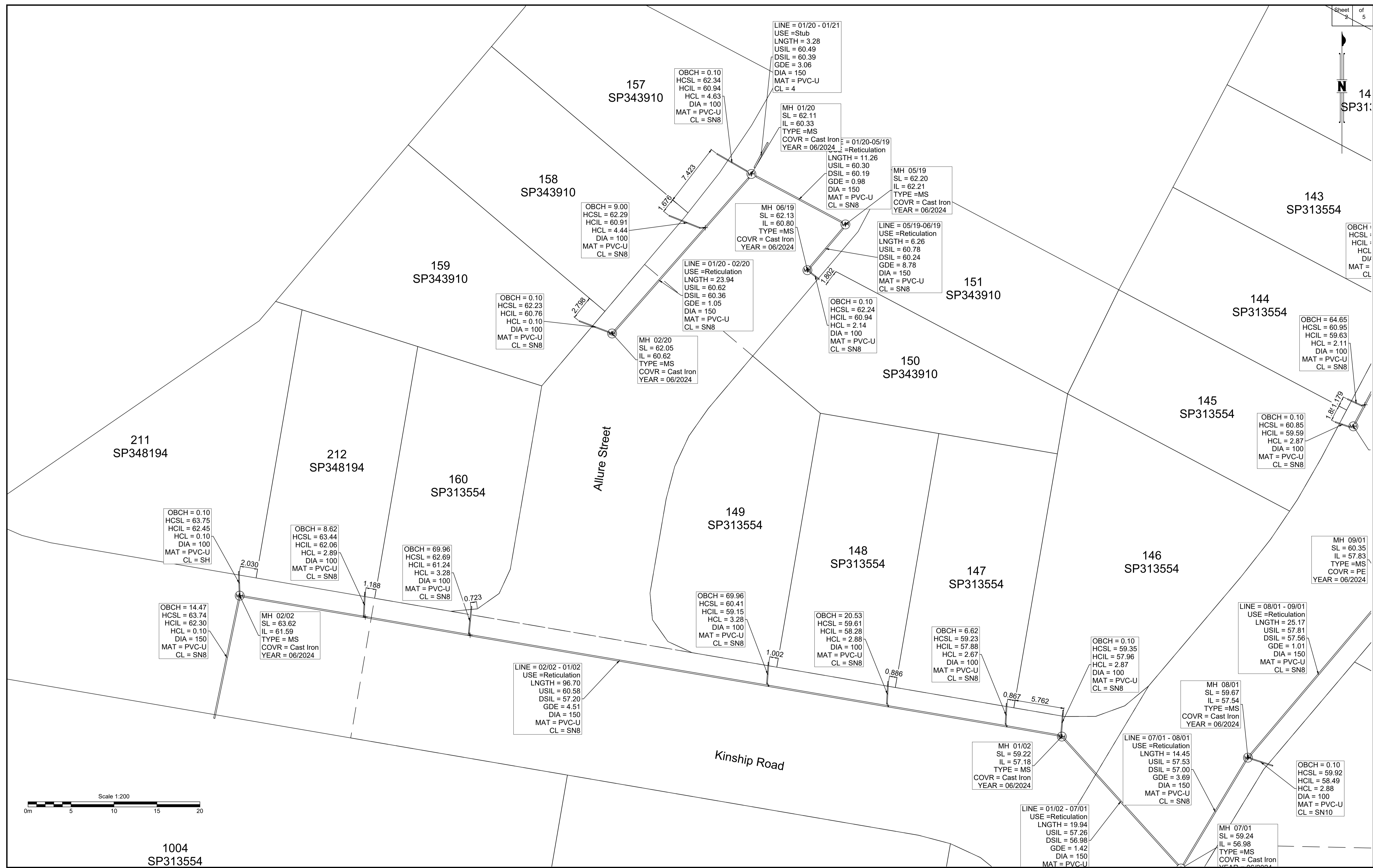
Rev	Description	Date	Initial
A	ORIGINAL	17/01/2025	BDH

Rev	Description	Date	Initial
A	ORIGINAL	17/01/2025	BDH

SEWER - AS CONSTRUCTED
COURTNEY DRIVE
UPPER COOMERA
OPW/2023/311

Client: HB Australia Pty Ltd
Job No: 171101
Authority: Council of the City of Gold Coast
Plan No: 171101_042_ASC.pdf
DWG File: 171101_042_ASC.dwg
Level Origin & Datum: PSM170053 41.380 AHD
1:200 @ A1 Drawn: BDH
Date: 17/01/25

BENNETT + BENNETT
PO Box 5021, GCMC QLD 9726
Ph: (07) 5631 8000
mail@bennettandbennett.com.au
www.bennettandbennett.com.au



B.B.H.PTY. LTD ABN 010 427 531
(trading as Bennett and Bennett Group) hereby certify that the vertical and horizontal locations, and dimensions shown on this plan are a true and correct record of the As-Constructed information.

Agent
Date

I, _____ hereby certify that the As Constructed information shown on this plan is a true and correct record of sizes, types, materials, classes etc, and it corresponds with the relevant approved Engineering Drawings

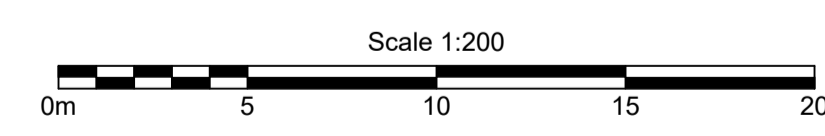
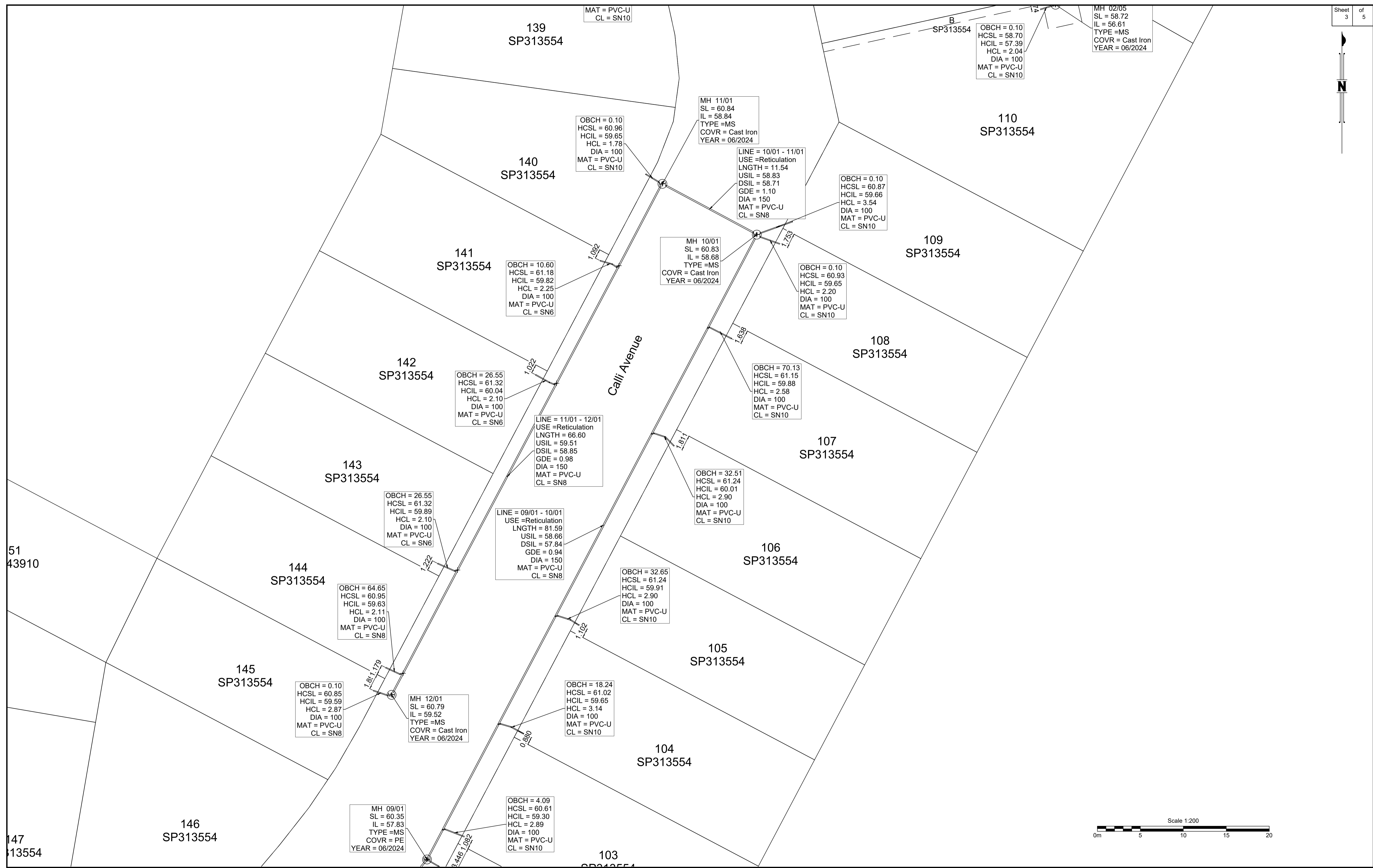
Signed _____
RPEQ No. _____ Date _____

Revisions			
Rev	Description	Date	Initial
A	ORIGINAL	17/01/2025	BDH

SEWER - AS CONSTRUCTED
COURTNEY DRIVE
UPPER COOMERA
OPW/2023/311

Client: HB Australia Pty Ltd
Job No: 171101
Authority: Council of the City of Gold Coast
Plan No: 171101_042_ASC.pdf
DWG File: 171101_042_ASC.dwg
Level Origin & Datum: PSM170053 41.380 AHD
1:200 @ A1 Drawn: BDH
Date: 17/01/25

BENNETT + BENNETT
PO Box 5021, GCMC QLD 9726
Ph: (07) 5631 8000
mail@bennettandbennett.com.au
www.bennettandbennett.com.au



B.B.H.PTY. LTD ABN 010 427 531
(trading as Bennett and Bennett Group) hereby certify that the vertical and horizontal locations, and dimensions shown on this plan are a true and correct record of the As-Constructed information.

Agent
Date

I, _____ hereby certify that the As Constructed information shown on this plan is a true and correct record of sizes, types, materials, classes etc, and it corresponds with the relevant approved Engineering Drawings

Signed _____
RPEQ No. _____ Date _____

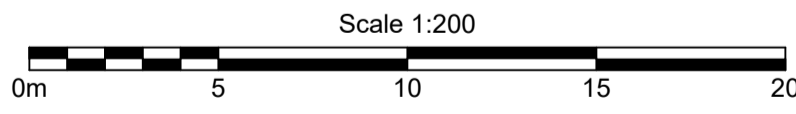
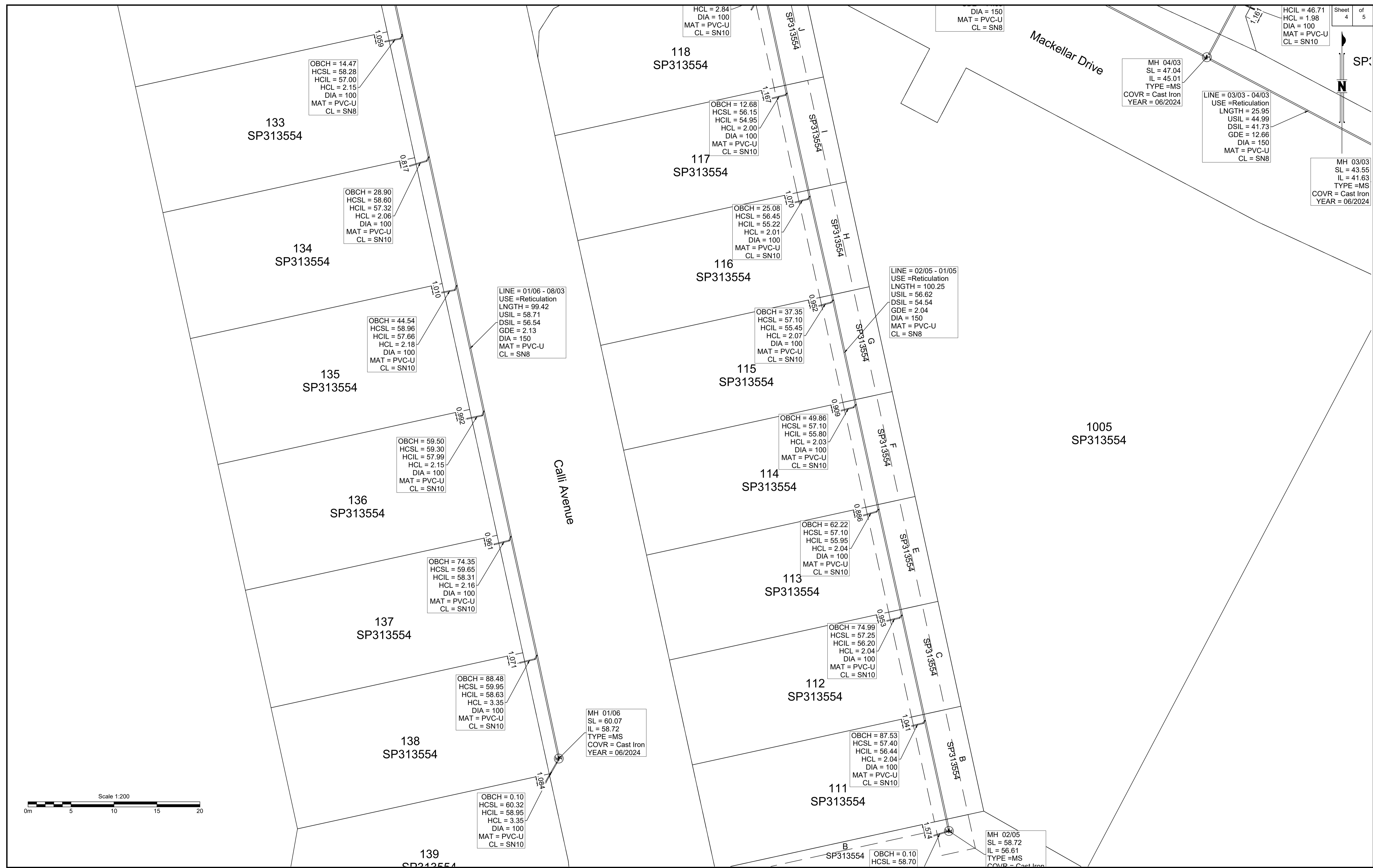
Revisions			
Rev	Description	Date	Initial
A	ORIGINAL	17/01/2025	BDH

SEWER - AS CONSTRUCTED
COURTNEY DRIVE
UPPER COOMERA
OPW/2023/311

Client:	HB Australia Pty Ltd
Job No:	171101
Authority:	Council of the City of Gold Coast
Plan No:	171101_042_ASC.pdf
DWG File:	171101_042_ASC.dwg
Level Origin & Datum:	PSM170053 41.380 AHD
Scale:	1:200 @ A1
Drawn:	BDH
Date:	17/01/25

BENNETT + BENNETT

PO Box 5021, GCMC QLD 9726
Ph: (07) 5631 8000
mail@bennettandbennett.com.au
www.bennettandbennett.com.au



B.B.H.PTY. LTD ABN 010 427 531
(trading as Bennett and Bennett Group) hereby certify that the vertical and horizontal locations, and dimensions shown on this plan are a true and correct record of the As-Constructed information.

Agent
Date

I, _____ hereby certify that the As Constructed information shown on this plan is a true and correct record of sizes, types, materials, classes etc, and it corresponds with the relevant approved Engineering Drawings

Signed _____
RPEQ No. _____ Date _____

Rev	Description	Date	Initial
A	ORIGINAL	17/01/2025	BDH

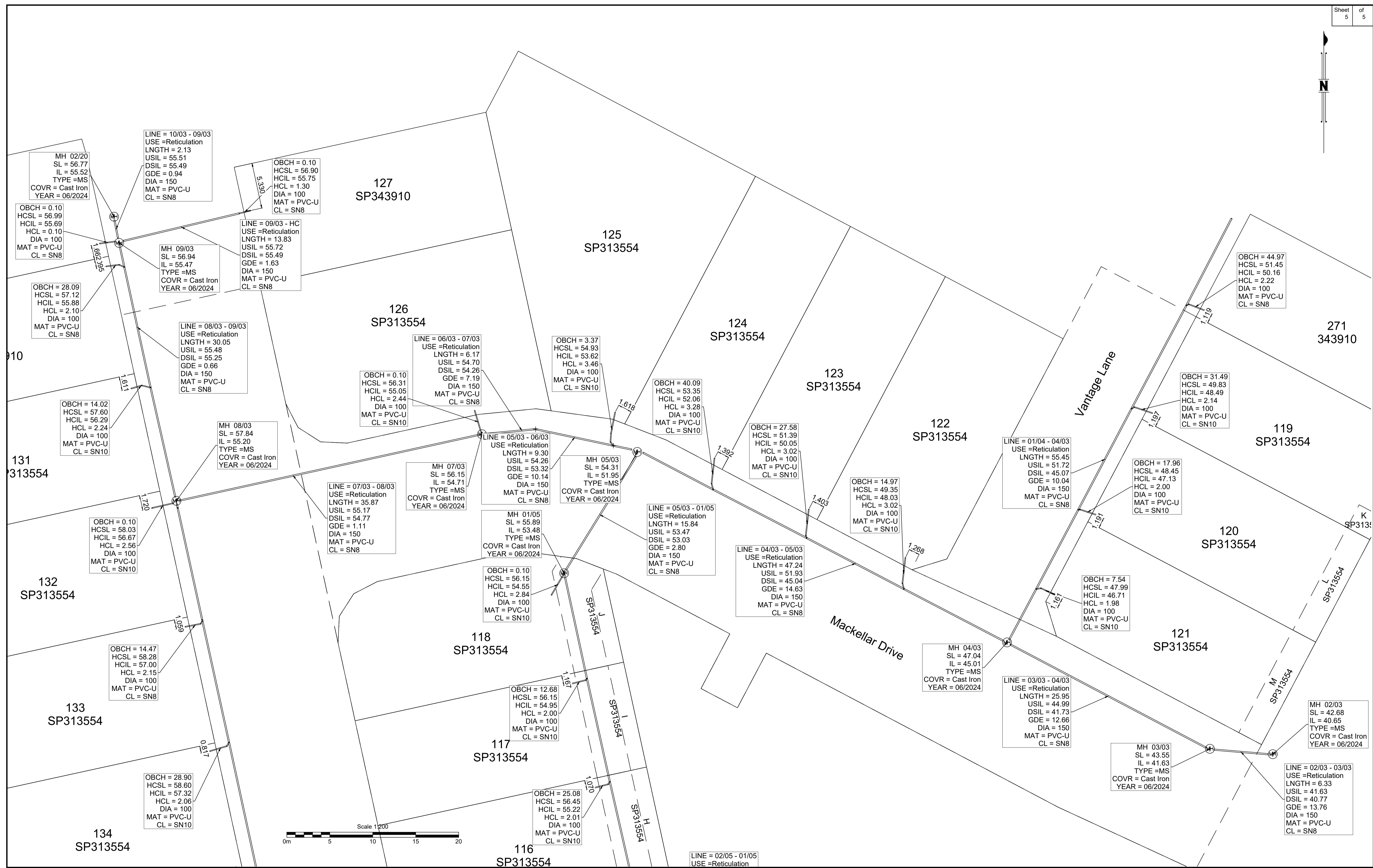
Rev	Description	Date	Initial
A	ORIGINAL	17/01/2025	BDH

SEWER - AS CONSTRUCTED
COURTNEY DRIVE
UPPER COOMERA
OPW/2023/311

Client:	HB Australia Pty Ltd
Job No:	171101
Authority:	Council of the City of Gold Coast
Plan No:	171101_042_ASC.pdf
DWG File:	171101_042_ASC.dwg
Level Origin & Datum:	PSM170053 41.380 AHD
Scale:	1:200 @ A1
Drawn:	BDH
Date:	17/01/25

BENNETT + BENNETT

PO Box 5021, GCMC QLD 9726
Ph: (07) 5631 8000
mail@bennettandbennett.com.au
www.bennettandbennett.com.au



B.B.H.PTY. LTD ABN 010 427 531
(trading as Bennett and Bennett Group) hereby certify that the vertical and horizontal locations, and dimensions shown on this plan are a true and correct record of the As-Constructed information.

Agent
Date

I, _____ hereby certify that the As Constructed information shown on this plan is a true and correct record of sizes, types, materials, classes etc, and it corresponds with the relevant approved Engineering Drawings

Signed _____
RPEQ No. _____ Date _____

Revisions			
Rev	Description	Date	Initial
A	ORIGINAL	17/01/2025	BDH

SEWER - AS CONSTRUCTED
COURTNEY DRIVE
UPPER COOMERA
OPW/2023/311

Client: HB Australia Pty Ltd
Job No: 171101
Authority: Council of the City of Gold Coast
Plan No: 171101_042_ASC.pdf
DWG File: 171101_042_ASC.dwg
Level Origin & Datum: PSM170053 41.380 AHD
1:1000 @ A1 Drawn: BDH
Date: 17/01/25

BENNETT + BENNETT

PO Box 5021, GCMC QLD 9726
Ph: (07) 5631 8000
mail@bennettandbennett.com.au
www.bennettandbennett.com.au