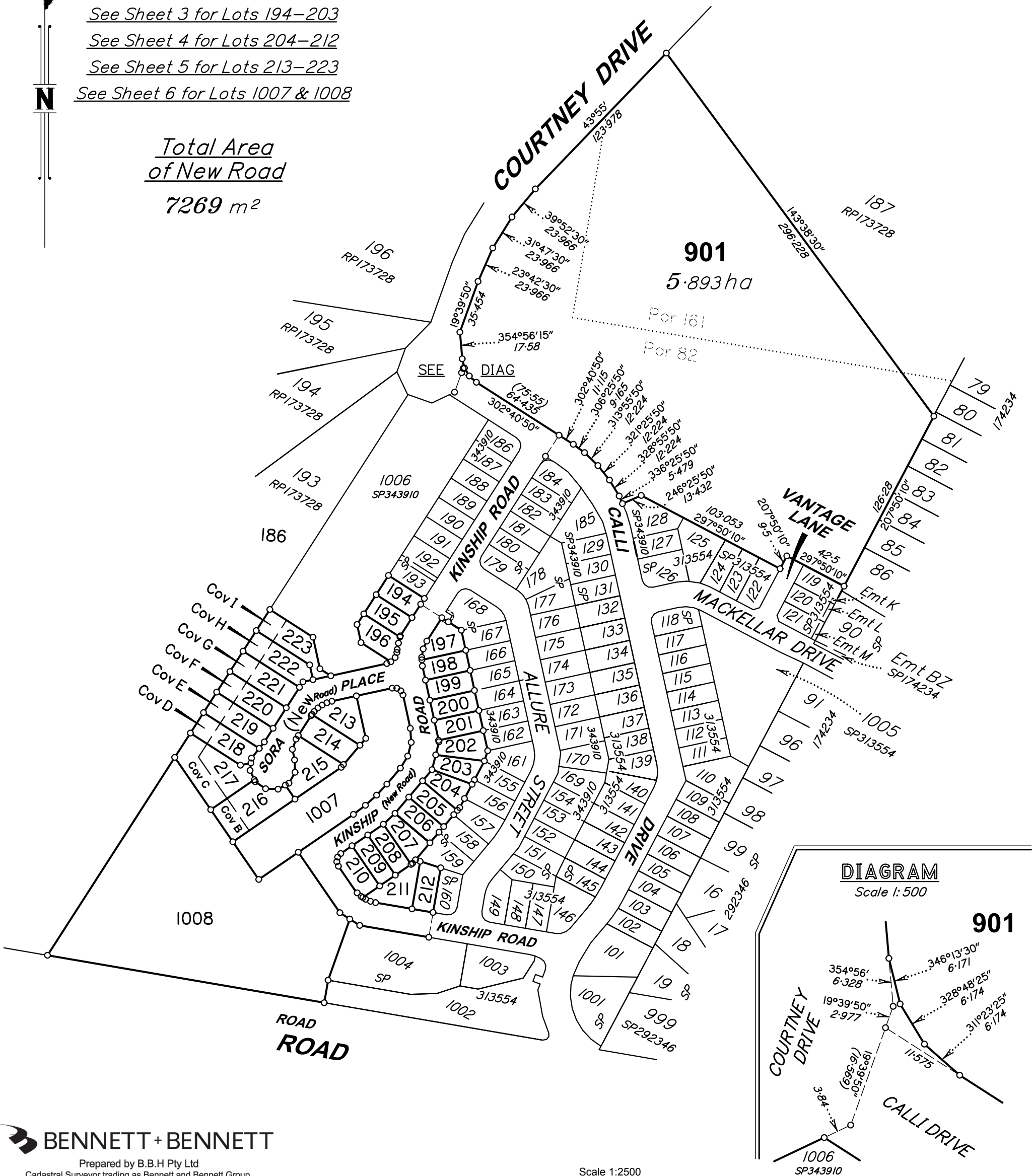


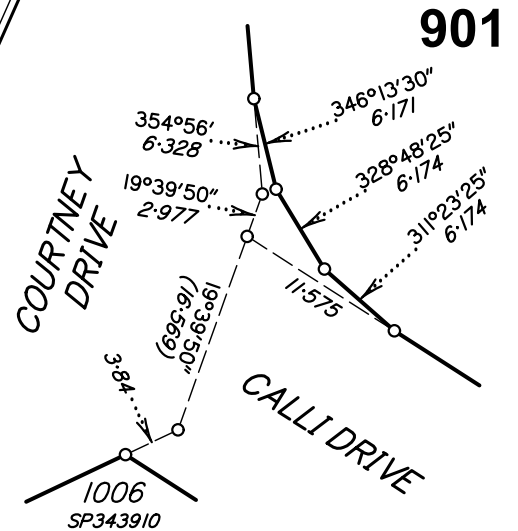
See Sheet 3 for Lots 194-203  
See Sheet 4 for Lots 204-212  
See Sheet 5 for Lots 213-223  
See Sheet 6 for Lots 1007 & 1008



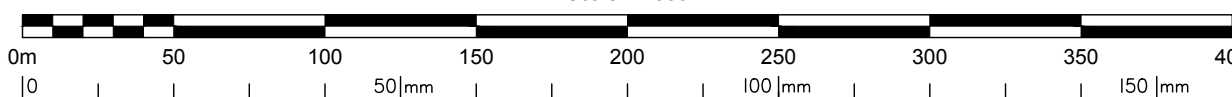
Total Area  
of New Road  
7269 m<sup>2</sup>



**DIAGRAM**  
Scale 1:500



**BENNETT + BENNETT**  
Prepared by B.B.H Pty Ltd  
Cadastral Surveyor trading as Bennett and Bennett Group.  
Surveying, Town Planning & Spatial Services.  
www.bennettandbennett.com.au



State copyright reserved.

**NOTE!**  
This is a disclosure plan (standard format) and the final plan may be subject to change. The proposed lots have not been defined on site, and B.B.H. Pty Ltd Cadastral Surveyor accepts no responsibility for any amendments to location, areas, or shape that may occur during the development process. This plan has been prepared for the purpose of identifying the approximate location and size of registrable interests, and has been derived from information supplied by others. Lot areas may vary by up to 2.0%. This note is an integral part of this plan and no part of the plan may be reproduced without this note.

**Disclosure Plan of Lots 194-223, 901, 1007 & 1008 and Covenants B-I in Lots 216-223 respectively**

*Cancelling Lot 902 on SP343910*

LOCAL GOVERNMENT:  
**GOLD COAST CITY COUNCIL**

LOCALITY:  
**UPPER COOMERA**

Meridian: MGA Zone 56

Survey Records: No

Scale: **1:2500**  
Format: **STANDARD**

**DRAFT SP348194**

**WARNING : Folded or Mutilated Plans will not be accepted.  
Plans may be rolled.  
Information may not be placed in the outer margins.**

(Dealing No.)

4. Lodged by

(Include address, phone number, reference, and Lodger Code)

I. Existing		Created		
Title Reference	Description	New Lots	Road	Secondary Interests

SHEET 2 IS  
INTENTIONALLY  
BLANK

**6. Building Format Plans only.**  
I certify that :  
\* As far as it is practical to determine, no part of the building shown on this plan encroaches onto adjoining lots or road;  
\* Part of the building shown on this plan encroaches onto adjoining \* lots and road

.....  
Cadastral Surveyor/Director\* Date  
\*delete words not required

**7. Lodgement Fees :**

Survey Deposit	\$	.....
Lodgement	\$	.....
.....New Titles	\$	.....
Photocopy	\$	.....
Postage	\$	.....
<b>TOTAL</b>	<b>\$</b>	<b>.....</b>

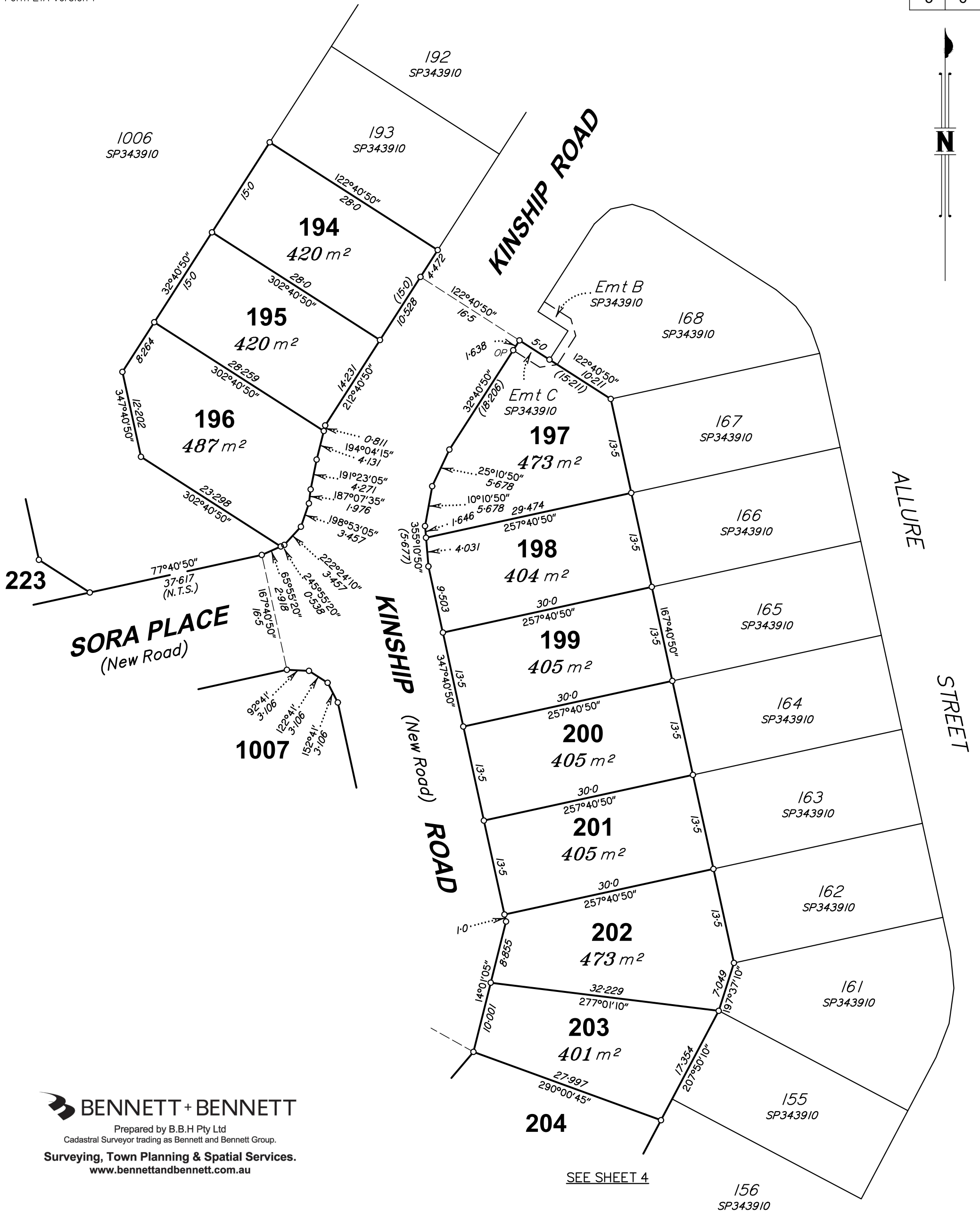
Lots	Orig

2. Orig Grant Allocation :

3. References :  
Dept File :  
Local Govt :  
Surveyor : 171101

5. Passed & Endorsed :  
By : B.B.H. PTY LTD ACN 010 427 531  
Date :  
Signed :  
Designation : Cadastral Surveyor/Director

8. Insert Plan Number **DRAFT SP348194**



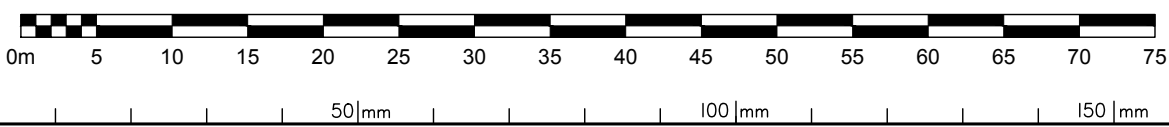
**BENNETT + BENNETT**  
 Prepared by B.B.H Pty Ltd  
 Cadastral Surveyor trading as Bennett and Bennett Group.  
**Surveying, Town Planning & Spatial Services.**  
[www.bennettandbennett.com.au](http://www.bennettandbennett.com.au)

SEE SHEET 4

**NOTE!**

This is a disclosure plan (standard format) and the final plan may be subject to change. The proposed lots have not been defined on site, and B.B.H. Pty Ltd Cadastral Surveyor accepts no responsibility for any amendments to location, areas, or shape that may occur during the development process. This plan has been prepared for the purpose of identifying the approximate location and size of registrable interests, and has been derived from information supplied by others. Lot areas may vary by up to 2.0%. This note is an integral part of this plan and no part of the plan may be reproduced without this note.

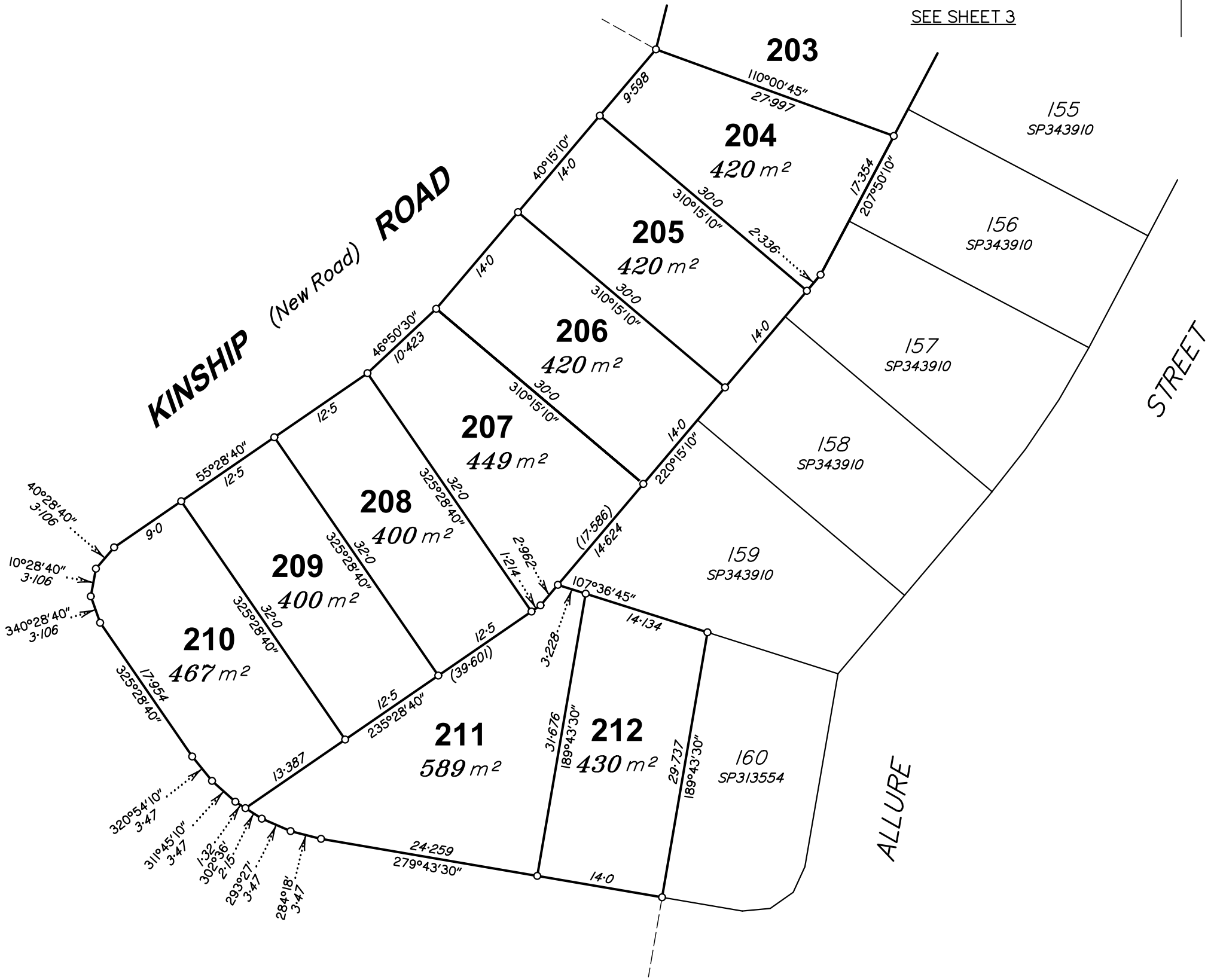
Scale 1:500



State copyright reserved.

Insert Plan Number **DRAFT SP348194**

Bennett + Bennett 17101\_036\_CON.DWG D.L 12/06/2024

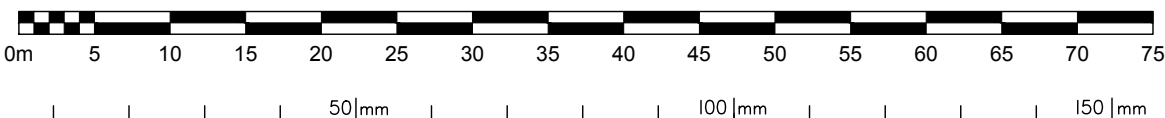


**BENNETT + BENNETT**  
 Prepared by B.B.H Pty Ltd  
 Cadastral Surveyor trading as Bennett and Bennett Group.  
**Surveying, Town Planning & Spatial Services.**  
[www.bennettandbennett.com.au](http://www.bennettandbennett.com.au)

**NOTE!**

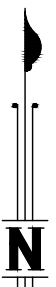
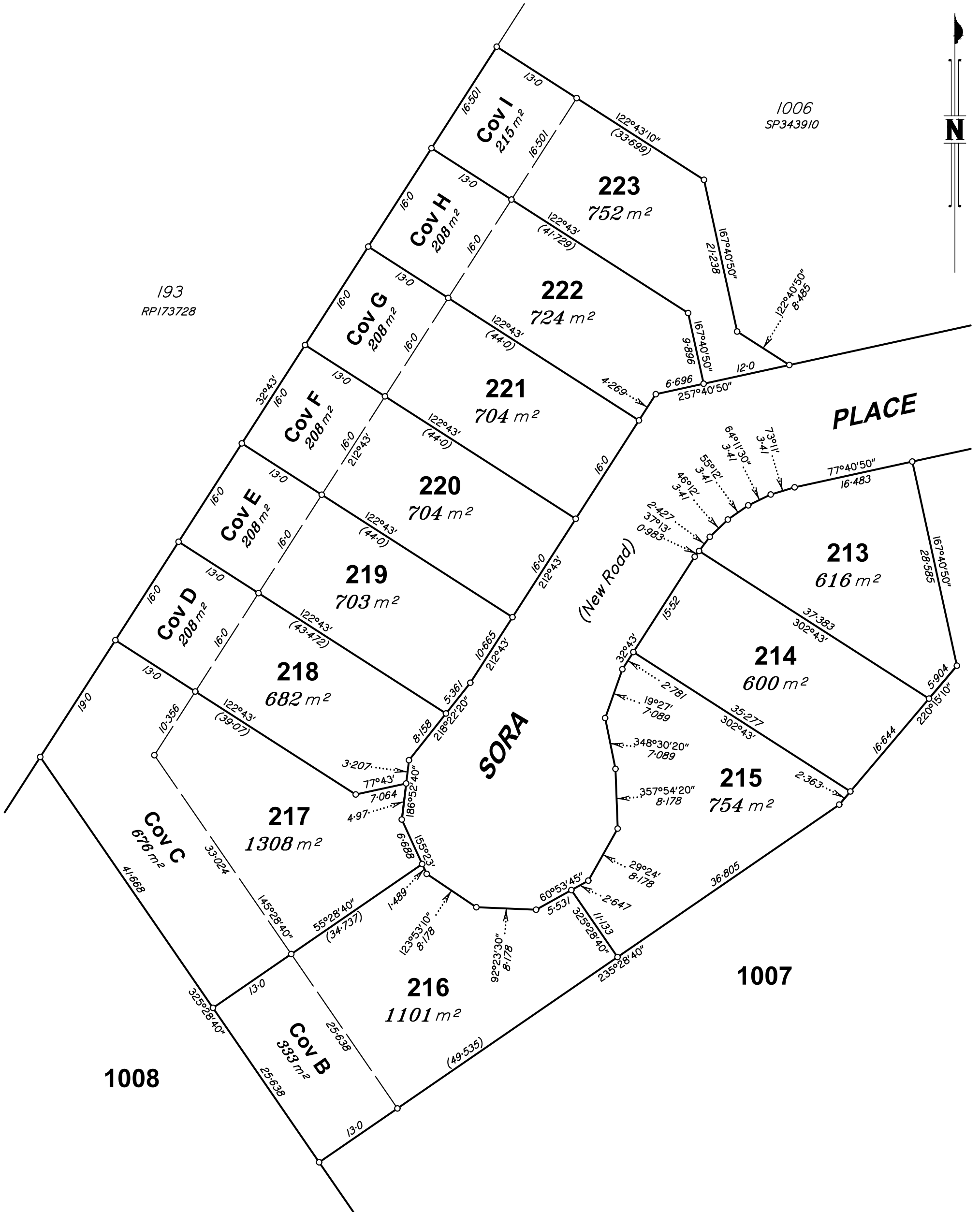
This is a disclosure plan (standard format) and the final plan may be subject to change. The proposed lots have not been defined on site, and B.B.H. Pty Ltd Cadastral Surveyor accepts no responsibility for any amendments to location, areas, or shape that may occur during the development process. This plan has been prepared for the purpose of identifying the approximate location and size of registrable interests, and has been derived from information supplied by others. Lot areas may vary by up to 2.0%. This note is an integral part of this plan and no part of the plan may be reproduced without this note.

Scale 1:500



State copyright reserved.

Insert Plan Number **DRAFT SP348194**



**NOTE!**

This is a disclosure plan (standard format) and the final plan may be subject to change. The proposed lots have not been defined on site, and B.B.H. Pty Ltd Cadastral Surveyor accepts no responsibility for any amendments to location, areas, or shape that may occur during the development process. This plan has been prepared for the purpose of identifying the approximate location and size of registrable interests, and has been derived from information supplied by others. Lot areas may vary by up to 2.0%. This note is an integral part of this plan and no part of the plan may be reproduced without this note.

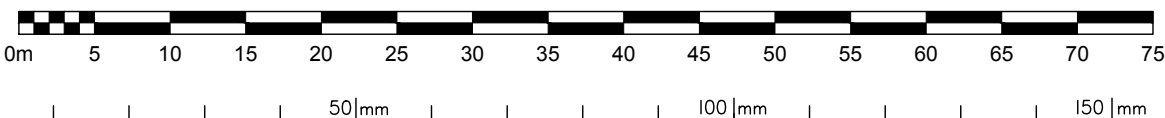
**BENNETT + BENNETT**

Prepared by B.B.H Pty Ltd  
Cadastral Surveyor trading as Bennett and Bennett Group.

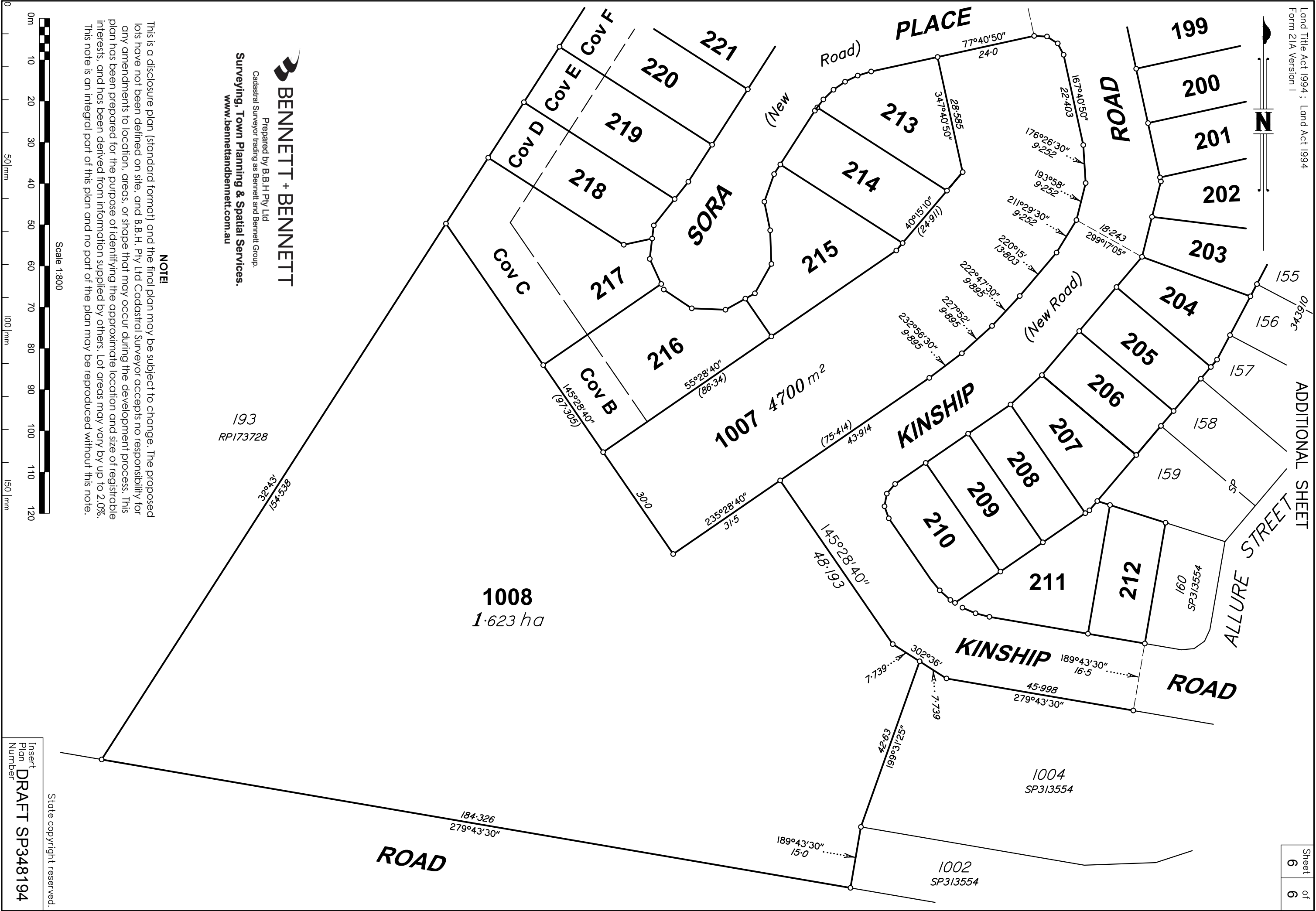
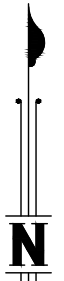
**Surveying, Town Planning & Spatial Services.**  
www.bennettandbennett.com.au

State copyright reserved.

Scale 1:500

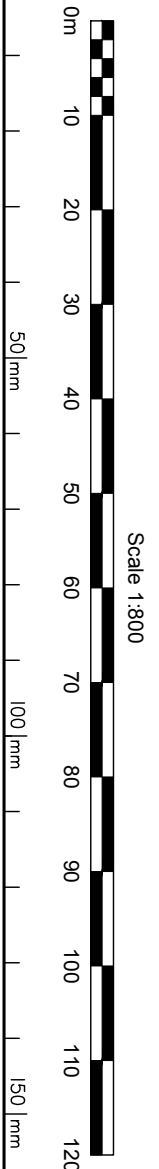


Insert Plan Number **DRAFT SP348194**



**BENNETT + BENNETT**  
 Prepared by B.B.H Pty Ltd  
 Cadastral Surveyor trading as Bennett and Bennett Group.  
**Surveying, Town Planning & Spatial Services.**  
 www.bennettandbennett.com.au

**NOTE!**  
 This is a disclosure plan (standard format) and the final plan may be subject to change. The proposed lots have not been defined on site, and B.B.H. Pty Ltd Cadastral Surveyor accepts no responsibility for any amendments to location, areas, or shape that may occur during the development process. This plan has been prepared for the purpose of identifying the approximate location and size of registrable interests, and has been derived from information supplied by others. Lot areas may vary by up to 2.0%. This note is an integral part of this plan and no part of the plan may be reproduced without this note.



State copyright reserved.  
 Insert Plan Number  
**DRAFT SP348194**