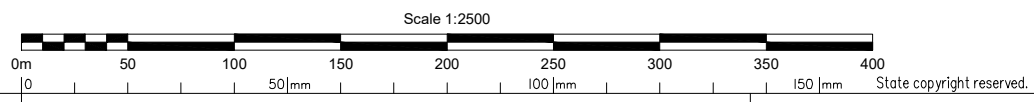


BENNETT + BENNETT
Prepared by B.B.H Pty Ltd
Cadastral Surveyor trading as Bennett and Bennett Group.
Surveying, Town Planning & Spatial Services.
www.bennettandbennett.com.au



NOTE!
This is a disclosure plan (standard format) and the final plan may be subject to change. The proposed lots have not been defined on site, and B.B.H. Pty Ltd Cadastral Surveyor accepts no responsibility for any amendments to location, areas, or shape that may occur during the development process. This plan has been prepared for the purpose of identifying the approximate location and size of registrable interests, and has been derived from information supplied by others. Lot areas may vary by up to 2.0% and dimensions may vary by up to 1.0%. This note is an integral part of this plan and no part of the plan may be reproduced without this note.

Plan of Lots 101–126, 131–149, 160, 900, 1001–1005 and Covenant A in Lot 101 & Easements B–M in Lots 110–121 respectively

Cancelling Lots 188–192 on RP173728

LOCAL GOVERNMENT:
GOLD COAST CITY COUNCIL

LOCALITY:
UPPER COOMERA

Meridian: *MGA Zone 56 vide SP292346*

Survey Records: *No*

Scale: **1:2500**

Format: **STANDARD**

DRAFT SP313554

Bennett + Bennett 171101_031_CON.DWG SCO 13/09/2023

**WARNING : Folded or Mutilated Plans will not be accepted.
Plans may be rolled.
Information may not be placed in the outer margins.**

(Dealing No.)

4. Lodged by

(Include address, phone number, reference, and Lodger Code)

i. Existing		Created		
Title Reference	Description	New Lots	Road	Secondary Interests

SHEET 2 IS INTENTIONALLY BLANK

6. Building Format Plans only.

I certify that :
 * As far as it is practical to determine, no part of the building shown on this plan encroaches onto adjoining lots or road;
 * Part of the building shown on this plan encroaches onto adjoining * lots and road

.....
 Cadastral Surveyor/Director * Date
 *delete words not required

7. Lodgement Fees :

Survey Deposit	\$
Lodgement	\$
.....New Titles	\$
Photocopy	\$
Postage	\$
TOTAL	\$

8. Insert Plan Number **DRAFT SP313554**

Lots	Orig
------	------

2. Orig Grant Allocation :

3. References :
 Dept File :
 Local Govt :
 Surveyor : 171101

5. Passed & Endorsed :

By: B.B.H. PTY LTD ACN 010 427 531
 Date :
 Signed :
 Designation : **Liaison Officer**

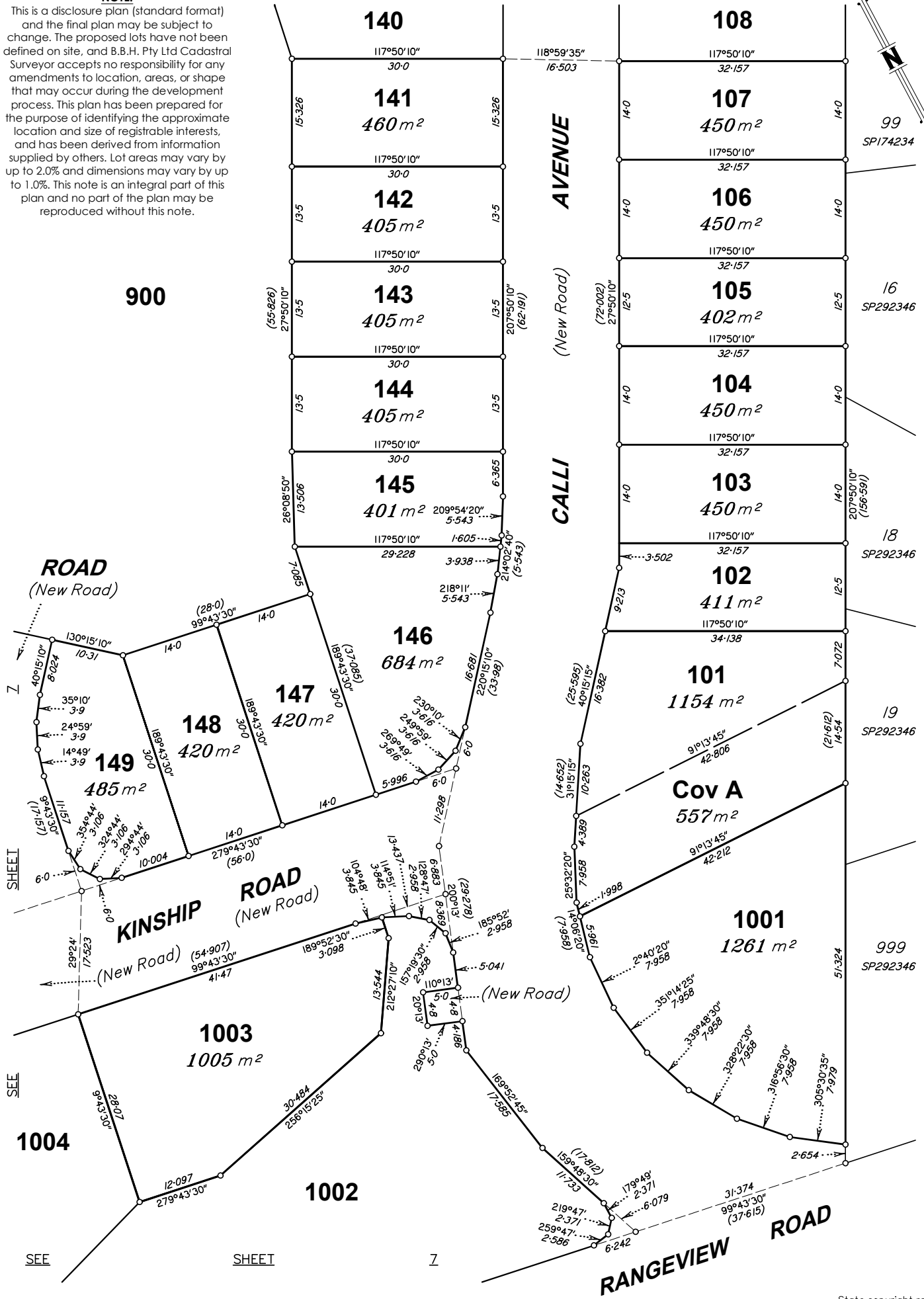
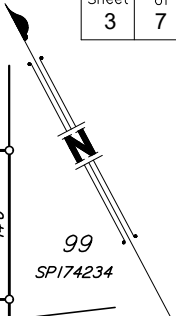
NOTE

This is a disclosure plan (standard format) and the final plan may be subject to change. The proposed lots have not been defined on site, and B.B.H. Pty Ltd Cadastral Surveyor accepts no responsibility for any amendments to location, areas, or shape that may occur during the development process. This plan has been prepared for the purpose of identifying the approximate location and size of registrable interests, and has been derived from information supplied by others. Lot areas may vary by up to 2.0% and dimensions may vary by up to 1.0%. This note is an integral part of this plan and no part of the plan may be reproduced without this note.

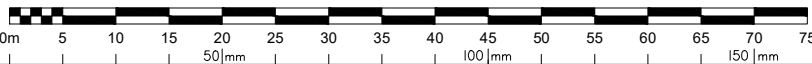
SEE

SHEET

4



Scale 1:500

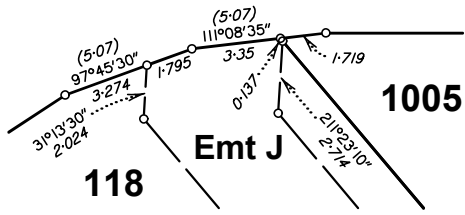


State copyright reserved.

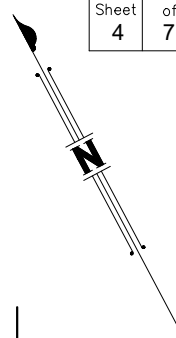
Insert Plan Number **DRAFT SP313554**

DIAGRAM A
Scale 1:200

MACKELLAR DRIVE
(New Road)

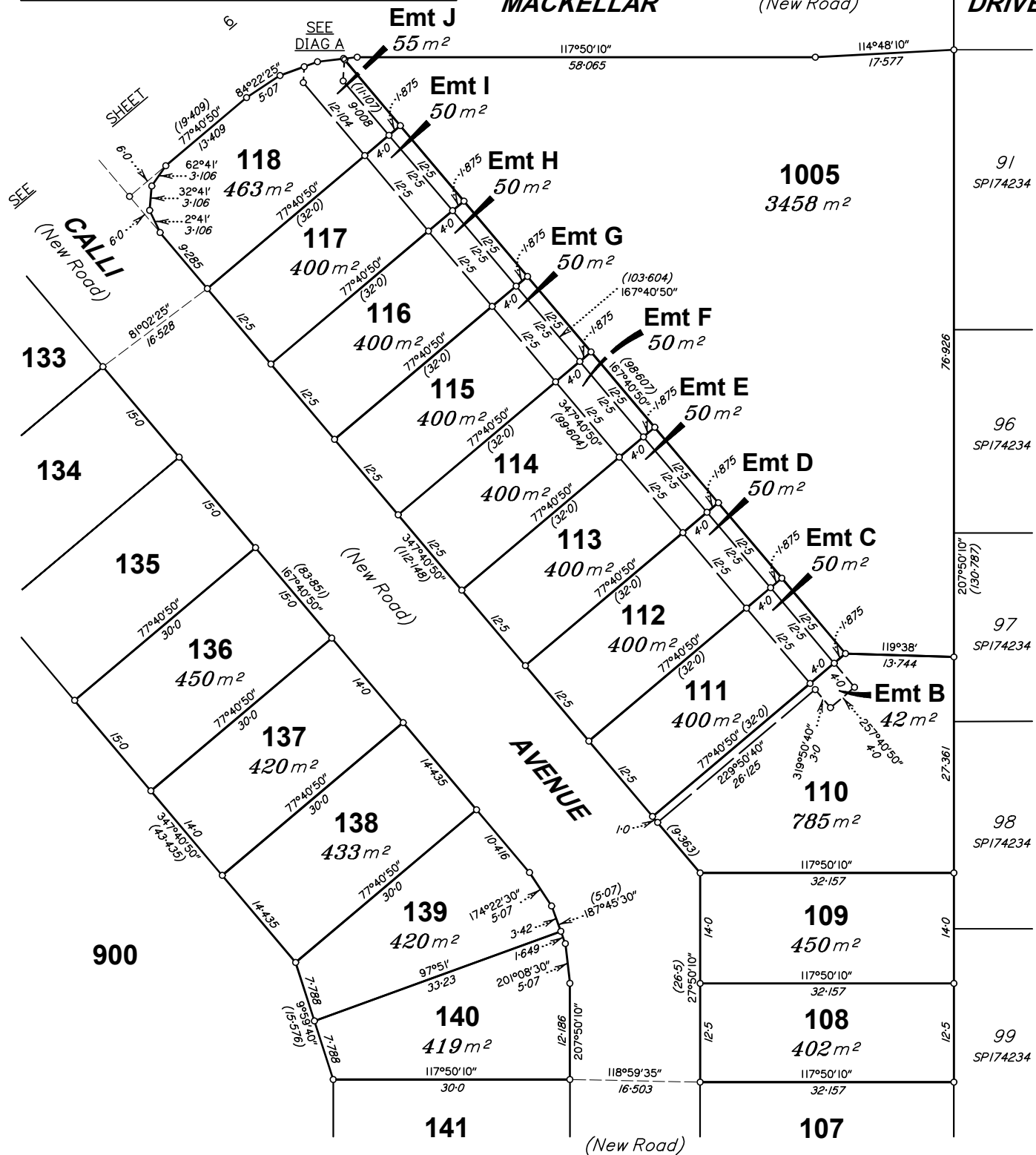


NOTE!
This is a disclosure plan (standard format) and the final plan may be subject to change. The proposed lots have not been defined on site, and B.B.H. Pty Ltd Cadastral Surveyor accepts no responsibility for any amendments to location, areas, or shape that may occur during the development process. This plan has been prepared for the purpose of identifying the approximate location and size of registrable interests, and has been derived from information supplied by others. Lot areas may vary by up to 2.0% and dimensions may vary by up to 1.0%. This note is an integral part of this plan and no part of the plan may be reproduced without this note.



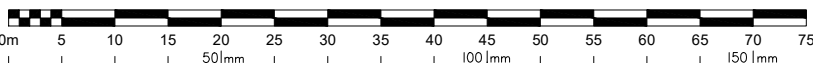
SEE SHEET 5

MACKELLAR DRIVE (New Road)



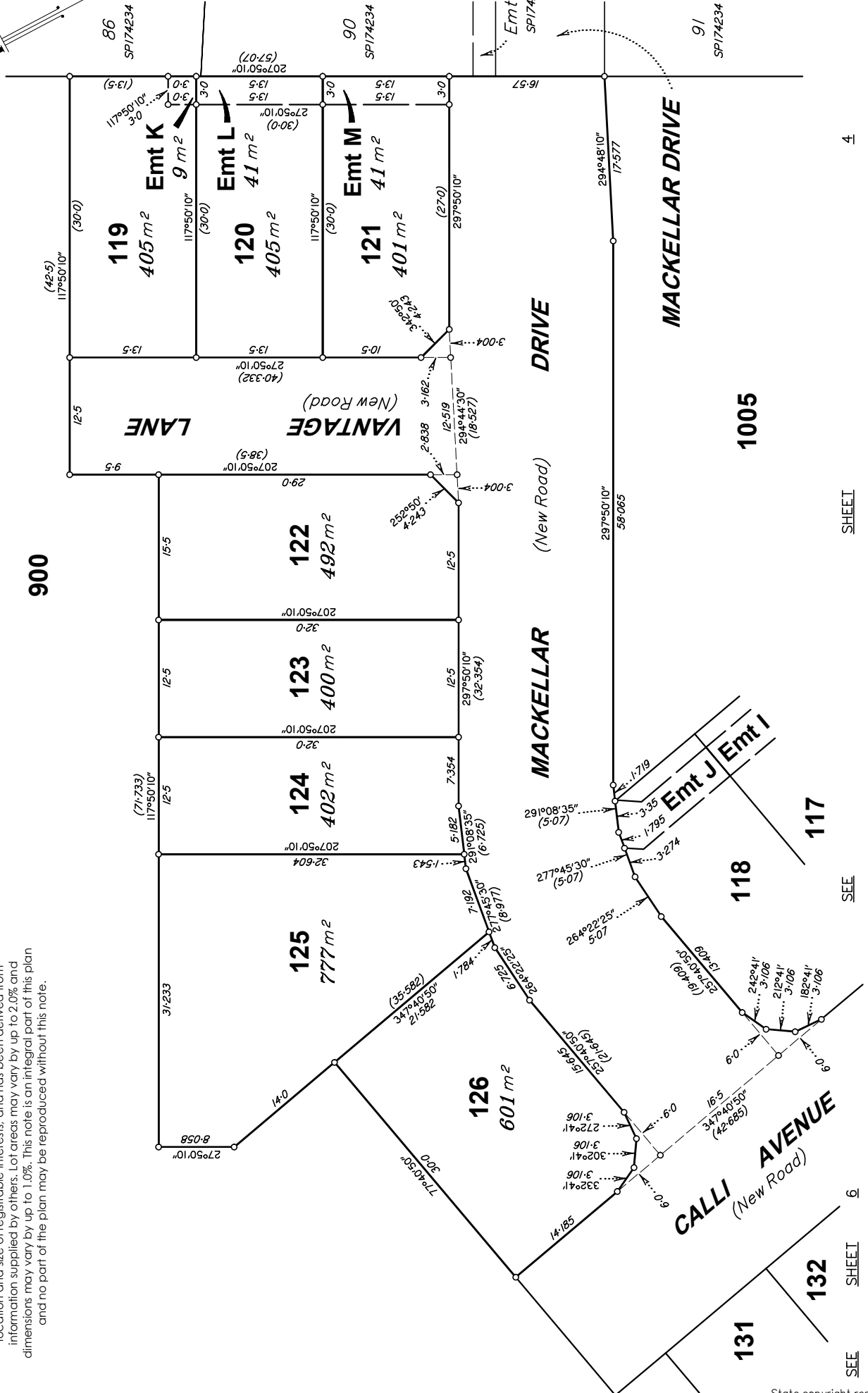
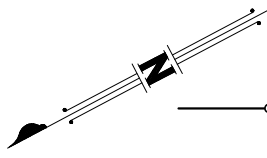
SEE SHEET 3

Scale 1:500



State copyright reserved.

Insert Plan Number **DRAFT SP313554**



NOTE
This is a disclosure plan (standard format) and the final plan may be subject to change. The proposed lots have not been defined on site, and B.H.H. Pty Ltd Cadastral Surveyor accepts no responsibility for any amendments to location, areas, or shape that may occur during the development process. This plan has been prepared for the purpose of identifying the approximate location and size of registrable interests, and has been derived from information supplied by others. Lot areas may vary by up to 2.0% and dimensions may vary by up to 1.0%. This note is an integral part of this plan and no part of the plan may be reproduced without this note.

Scale 1:400



Insert Plan Number **DRAFT SP313554**

4

SHEET

SEE

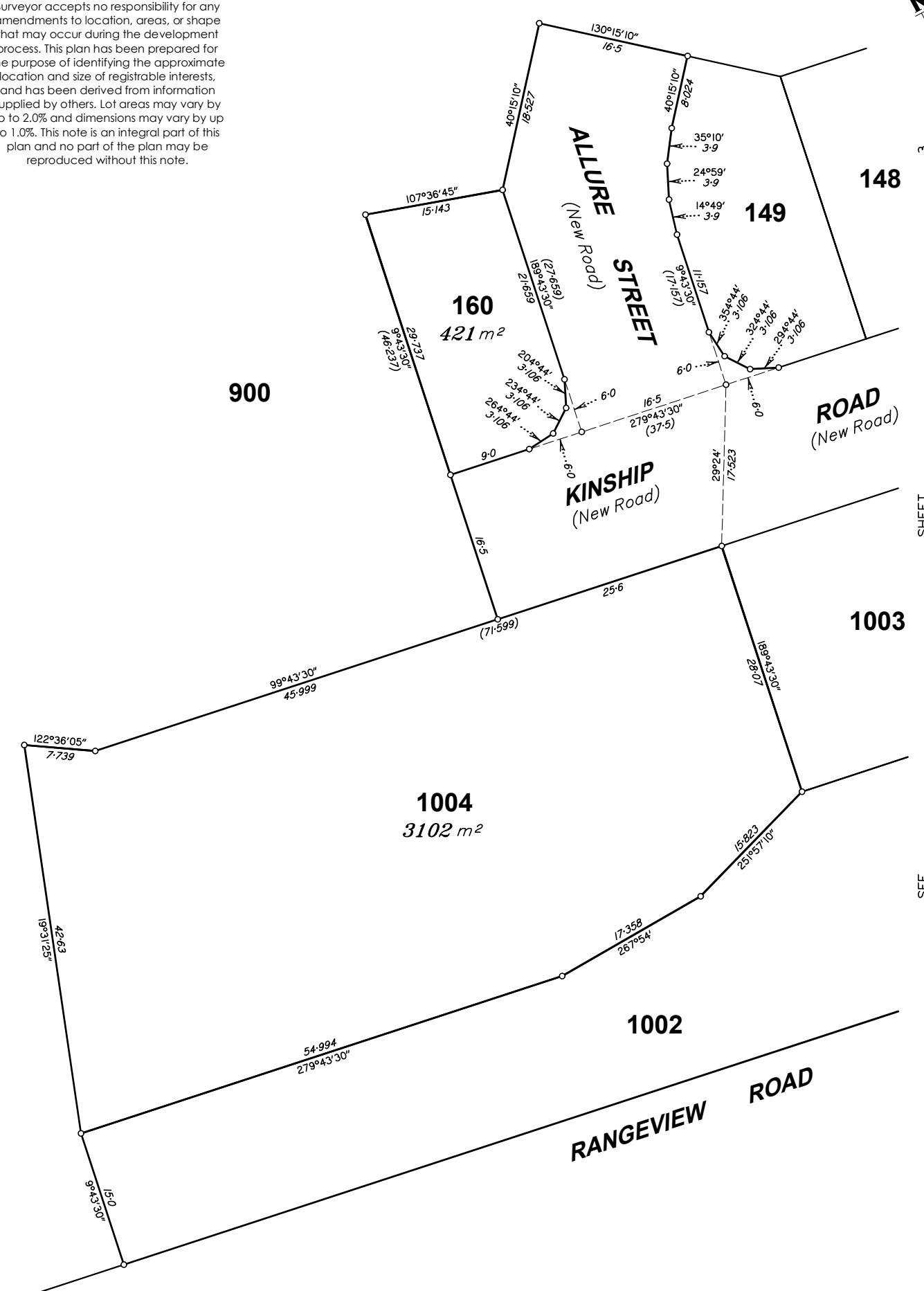
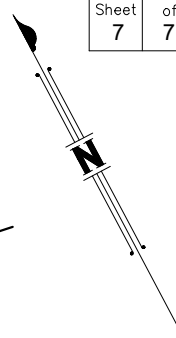
SHEET

6

State copyright reserved.

NOTE

This is a disclosure plan (standard format) and the final plan may be subject to change. The proposed lots have not been defined on site, and B.B.H. Pty Ltd Cadastral Surveyor accepts no responsibility for any amendments to location, areas, or shape that may occur during the development process. This plan has been prepared for the purpose of identifying the approximate location and size of registrable interests, and has been derived from information supplied by others. Lot areas may vary by up to 2.0% and dimensions may vary by up to 1.0%. This note is an integral part of this plan and no part of the plan may be reproduced without this note.



900

148

149

160
421 m²

1003

1004
3102 m²

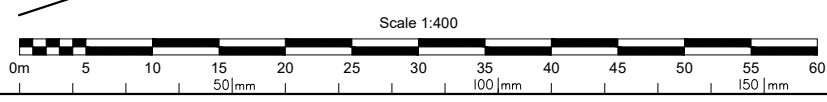
1002

RANGEVIEW ROAD

3

SHEET

SEE



State copyright reserved.

Insert Plan Number **DRAFT SP313554**

Bennett + Bennett 17101_031_CON.DWG SCO 13/09/2023